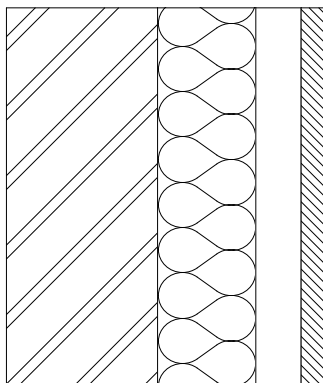


### EXTERNAL WALL COMPOSITION



Lime-cement wall block

$d = 0,200 \text{ m}$      $\lambda = 1,10 \text{ W/mK}$

Kingspan Kooltherm K15

$d = 0,130 \text{ m}$      $\lambda = 0,02 \text{ W/mK}$

Air cavity

$d = 0,060 \text{ m}$

Ceramic tile Alphaton

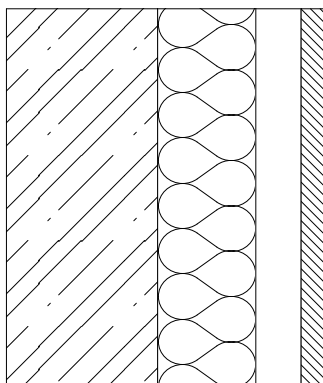
$d = 0,030 \text{ m}$

### THERMAL CHARACTERISTICS

$R_T = 0,13 + 0,200 / 1,10 + 0,130 / 0,02 + 0,13 = 6,942 \text{ m}^2\text{K/W}$

$U = 1 / 6,942 = 0,144 \text{ W/m}^2\text{K}$

### EXTERNAL WALL COMPOSITION



Reinforced concrete wall core

$d = 0,200 \text{ m}$      $\lambda = 1,43 \text{ W/mK}$

Kingspan Kooltherm K15

$d = 0,130 \text{ m}$      $\lambda = 0,02 \text{ W/mK}$

Air cavity

$d = 0,060 \text{ m}$

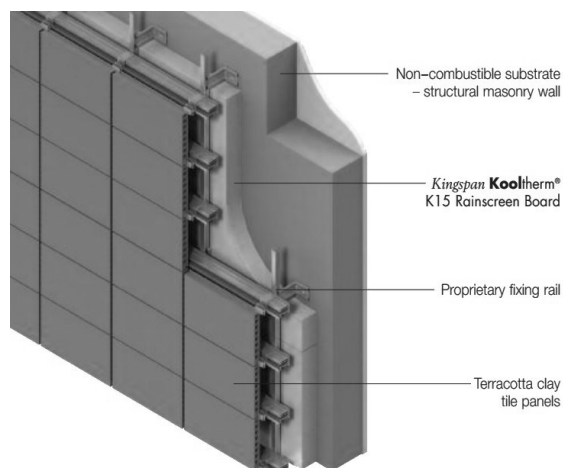
Ceramic tile Alphaton

$d = 0,030 \text{ m}$

### THERMAL CHARACTERISTICS

$R_T = 0,13 + 0,200 / 1,43 + 0,130 / 0,02 + 0,13 = 6,900 \text{ m}^2\text{K/W}$

$U = 1 / 6,900 = 0,145 \text{ W/m}^2\text{K}$



## CH08 - DIPLOMA SEMINAR

AUTHOR

Bc. Petr Dvořák, CA1NPS1

SUPERVISOR

prof. Ing. Jitka Mohelníková, Ph.D.



## UNIVERSITY RESIDENTIAL CENTRE

DRAWING ID

B08

SCALE

1:10, A4

DRAWING NAME

Compositions

DATE

20.1.2014